

ARCHWAY

PRODUCTS LIMITED



ROADMASTER[®]

Road repair and maintenance machinery



ROADMASTER®

Minimising the cost per tonne of road repairs

Since the introduction of Velocity Patching over 20 years ago, very little has changed until now. Earlier Velocity Patchers were typically used as a fast and effective means of dealing with a variety of road defects.

The future of road repair

The arrival of the Roadmaster® has taken the science of Velocity patching to a whole new level. By combining existing technology with new patented applications systems, Roadmaster® has enabled a whole new range of repair types to be carried out quickly and effectively.

Roadmaster®, with its patented application system can quickly and effectively apply single or multiple sealing layers to the cracked surface, extending the life of the road at minimum cost, and with very little disruption to normal traffic, in effect a miniature surface dress application in a single pass.



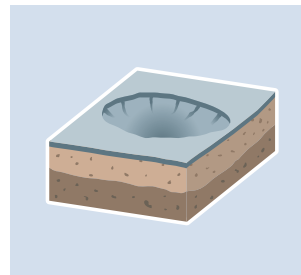
So what else does the Roadmaster® do?

The Roadmaster® can zap potholes quickly and effectively. The high volume blower can quickly blow away water and debris to allow a primer coat of binder to be applied to the surface. The Roadmaster® mixer system coats the chips in the special mixing chamber, from where they are blown into the pothole. The Roadmaster® operator can easily select the most suitable velocity for this task.

Broken edges can be built up and blended in to the existing surface. The precision forward movement of the Roadmaster®, using the Allison automatic gearbox gives infinite control, while allowing the operator to simply steer and observe. The procedure consists of coating the base with binder, filling with coated chips followed by a top layer of binder and chips. While the preferred chip size for finished work is 6mm, the Roadmaster® chip tank, with its twin outlets can carry two sizes to allow use of a larger chip as a base course for deeper work.

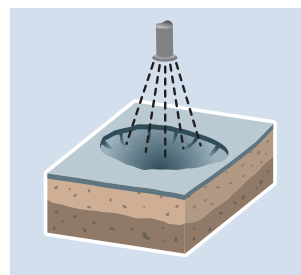
The Roadmaster® is ideal for use in pre-surface dress preparation - to fill depressions and cracks, re-instate stripped areas and repair broken edges.

The Roadmaster® rotary sweeper takes care of any loose chips on the road while the roller wheels provide additional compaction, leaving a long lasting and well defined patch, with straight sides and square corners.



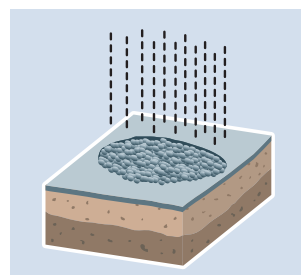
Step 1

Dust and debris are cleared from the area to be patched using the high volume blower.



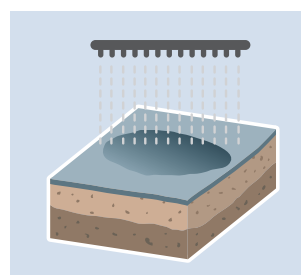
Step 2

Bitumen emulsion is sprayed to seal and create a binder for the repair.



Step 3

Bitumen and aggregate are combined to create a high density repair compacted from the bottom up for superior quality and durability.



Step 4

The repair is topped off with dry aggregate to allow immediate traffic on the new surface.

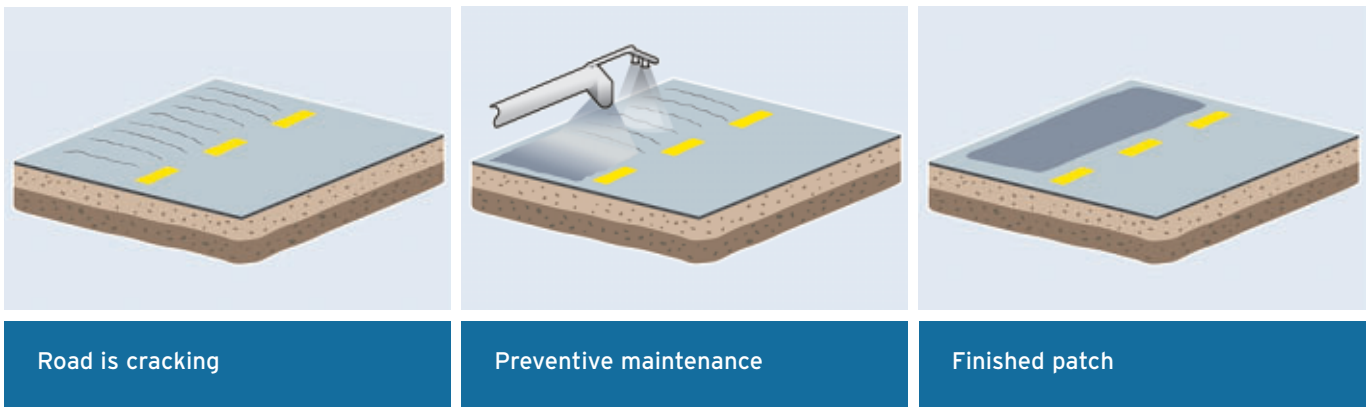
Taking velocity patching to the maximum

The Roadmaster® maximises the advantage of velocity patching. It is the most effective and efficient road repair system available. Roadmaster® delivers significantly lower cost per tonne compared to both traditional and other velocity patching methods. The capacity of the Roadmaster® allows for a full day of operation - up to 7 tonnes of chips per load and up to two loads per day.

The Roadmaster® advantage	The Roadmaster® benefits
<ul style="list-style-type: none"> → Quick hit - fill and repair potholed surfaces → Seal cracked surfaces before they break up → Surface dressing of small areas (e.g. trenches) → Build up road edges → Build up depressions in road surfaces → Pre surface-dress preparation → Tack coating prior to laying new road surfaces 	<ul style="list-style-type: none"> → Maximum safety → Maximum speed of response → Maximum versatility and flexibility → Maximum quality and durability of finish → Maximum manoeuvrability → Suited to major as well as minor roads

Surface dressing / sealing

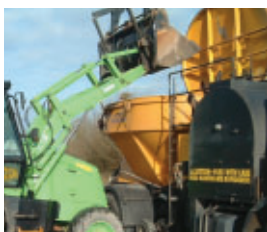
Roadmaster®, with its patented application system can quickly and effectively apply single or multiple sealing layers to the cracked surface, extending the life of the road at minimum cost, and with very little disruption to normal traffic, in effect a miniature surface dress application in a single pass.



Road is cracking

Preventive maintenance

Finished patch



Elongated hopper gives extra capacity while keeping centre of gravity low to ensure vehicle stability regardless of terrain



Main hydraulic functions are controlled by a heavy-duty industrial type joystick, ergonomically designed for maximum user comfort and safety. The sluice position control system allows the operator to pre-select the flow of stone chips.



Twin spray jets can be operated together or separately. This allows very fast even coverage when coating cracked surfaces or when priming areas prior to filling. Chips can be applied in the same operation.



Articulated boom folds neatly across the front of the truck for safer transport.



Patented stone splitter device allows even coverage of large areas with less visible joints between patches.

ROADMASTER®

Roadmaster® 195 | technical specification

The Roadmaster® 195 represents the latest advance in velocity patching technology. The machine is capable of placing up to 8 tonnes before reloading.

Vehicle Dimensions	Volvo FLE18 4 x 2 with Allison Automatic Transmission
Length	8,250mm
Width	2,500mm
Height	2,930mm
G.V.W	18,000kg
Equipment	
Aggregate Hopper	185 cu. ft. capacity. Hydraulically operated lid with quick release clamps
Blower	RAI lobe type direct coupled to Hatz SilentPack diesel engine with operator selectable speed
Hydraulic System	Tandem pump on Hatz engine to operate boom and tar pump
Bitumen Tank	1800 litre insulated with thermostatic control
Bitumen Heater	Automatic oil fired burner
Bitumen Delivery	Pump driven circulation system with balancing valve
Flush System	80 litre water flush with auto off
Bitumen Spray System	Patented twin SprayJet System with mixer jet
Stone Chip and Spread System	Patented splitter system
Rear Observation System	BackEye CCTV system. Also infra red rear detection system

*Due to our continued policy of product improvement we reserve the right to modify design details without notice.

ARCHWAY
PRODUCTS LIMITED

Jamestown
Carrick on Shannon
Co. Leitrim
Ireland

Tel: + 353 (0) 71 962 4753
Fax: + 353 (0) 71 962 4810
Email: sales@archwayproducts.com
Web: www.archwayproducts.com